



TRICHOTECH® WP 20g

TRICHOTECH® WP is a biological solution for control of soil pathogenic fungi and a boost to crop development.

PRODUCT SPECS

Active Agent *Trichoderma asperellum* H22
Agent Type Antagonistic Fungi

PRODUCT USES

Plant vigor. Solubilisation of nutrients
Soil pathogenic fungi: *Fusarium spp.*
Pythium spp.
Rhizoctonia spp.

TRICHOTECH® WP grows and establishes around the root zone then promotes plant growth, solubilises nutrients and controls soil borne pathogens.

BIOLOGY

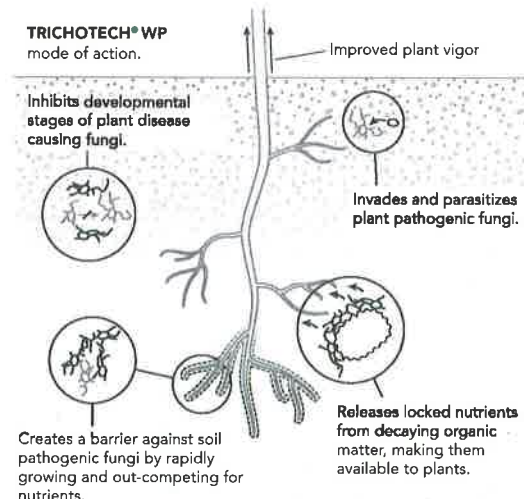
TRICHOTECH® WP contains spores of *Trichoderma asperellum* a soil dwelling fungi that is beneficial to plants. The fungus is antagonistic to soil pathogenic fungi; and has been used globally for control of soil borne fungal diseases caused by *Fusarium spp.*, *Pythium spp.* and *Rhizoctonia spp.* In addition, the strain is known to increase plant vigour.

MODE OF ACTION

TRICHOTECH® WP mechanisms:

- Competition – **TRICHOTECH® WP** is a fast growing fungus that easily out-competes soil pathogens, promoting niche exclusion of potential harmful microbes, and providing a barrier to combat disease causing fungi.
- Antibiosis – **TRICHOTECH® WP** produces chemical metabolites, which inhibit various developmental stages of plant disease causing fungi.
- Mycoparasitism – **TRICHOTECH® WP** produces enzymes that enable the fungus to invade and parasitize plant pathogenic fungi.
- Growth promotion – **TRICHOTECH® WP** increases plant growth vigour by releasing locked nutrients from decaying organic matter; supplying nutrients to plant roots.

EFFECTS OF TRICHOTECH® WP



INTRODUCTION METHOD

Owing to its mode of action, **TRICHOTECH® WP** should be applied preventively – before diseases occur in the plants. Recommended coverage: each 20g **TRICHOTECH® WP** sachet when mixed with 100L of water to cover an area of 100m².

- Drip application – Apply the required of **TRICHOTECH® WP**. Add 20g of **TRICHOTECH® WP** into 1L of water and mix thoroughly. Add the suspension into a large fertigation tank and make up the volume to 100L. Apply the suspension through the fertigation drip system. Agitate the mixture throughout the application period to ensure uniform distribution.
- Drench application – Prepare a suspension of **TRICHOTECH® WP** at the rate of 20g in 100L of water and mix thoroughly. Pour into a watering can or sprayer/applicator and apply evenly onto the target area.

RATE SCHED.

	Dosage for 100m ²	Interval (days)	Frequency	REI* & PHI**
Maintenance	20g in 100L	30	As needed	0
Light Curative	20g in 100L	14	x4	
Then revert to maintenance.				
Medium Curative	20g in 100L	14	x2	
Heavy Curative	Drench with a compatible fungicide then revert to Maintenance regimen			

STORAGE

Storage temp.	8-12°C
Conditions	Dark and dry
Max storage time	6 months

Do not freeze. Store upright.

PACKAGING

Antagonistic Fungi as packed	
Quantity	Pack Size
2.65 x 10 ⁸ CFU per gram	20g sachet

IPM ADVICE

Before introducing **TRICHOTECH® WP** to your crop it is important that the plant is clean of negative chemical residues. Please consult the Dudutech SIDE EFFECT GUIDE on dudutech.com for compatible chemicals.

